



2022 ILLINOIS  
**CRASH FACTS**  

---

**& STATISTICS**



At the Illinois Department of Transportation, we believe that one fatal car crash is one too many. That's why we work hard each and every day to make zero fatalities a reality: We're intent on ensuring the safety of travelers throughout the state.

As part of these efforts, we publish Illinois Crash Facts & Statistics each year. The 2022 report takes an in-depth look at driver behavior to help us better understand when, where and why crashes occur. This information is essential to improving our efforts to prevent injuries and fatalities on our roads. We study and share this information with the goal of ending crash fatalities for good.

In 2022, there were 1,147 fatal crashes on Illinois roads resulting in 1,268 deaths. This represents a 5% decrease in both fatal crashes and fatalities from 2021. Although there was a .9% increase in the number of total crashes, we also saw a 1.9% decrease in the total number of injuries in 2022. While most of these numbers are moving in the right direction, we remain steadfast in our commitment to bring them to zero.

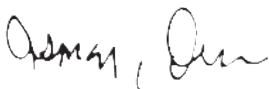
Alongside our engineering and programming efforts, IDOT leads multiple statewide programs to spread messages of safe driving behavior. Programs such as "Start Seeing Motorcycles," "Click it or Ticket" and "Drive Sober or Get Pulled Over" regularly remind the public of the commonsense measures they can take to travel safely. Our "It's Not a Game" multimedia safety campaign drives home the message that there are no extra lives, no respawns and no second chances to get it right when you are behind the wheel.

Perhaps most importantly, Gov. JB Pritzker's Rebuild Illinois is revitalizing our transportation system. The largest capital program in state history, Rebuild Illinois will invest a total of \$33.2 billion across all modes of transportation. These improvements will modernize our infrastructure and increase safety for all.

As you travel throughout our great state, please use commonsense measures to keep yourself and others safe: Slow down. Buckle up. Stay alert in work zones. Drive sober and avoid distractions. Keep an eye out for motorcycles, bicyclists and pedestrians. Move over for stopped vehicles, and give snow plows a wide berth.

Together, we'll reach our goal of zero fatalities.

Sincerely,



Omer M. Osman, P.E. Secretary

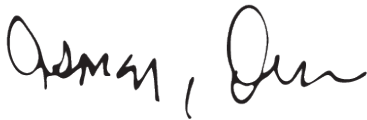
## A Message From Secretary Osman



Omer M. Osman, P.E. Secretary

# 2022 Illinois Crash Facts & Statistics

The Illinois Department of Transportation's Office of Planning and Programming, Bureau of Data Collection, extends its appreciation to local, county and state law enforcement agencies for their assistance in investigating and reporting traffic crashes and to county coroners and the medical examiner of Cook County for providing pertinent information. Without their efforts and cooperation, this publication would not have been possible.



Omer M. Osman, P.E.  
Secretary

Compiled by: Illinois Department of Transportation  
Office of Planning and Programming  
Bureau of Data Collection  
Crash Information Staff  
Crash Records Staff

# 2022 Illinois Crash Facts & Statistics

## Table of Contents

<a href="#"><u>Key Terms</u></a> .....	6
<a href="#"><u>Crash Data Overview</u></a> .....	8
<a href="#"><u>Illinois' Highway Safety Clock</u></a> .....	9
<a href="#"><u>Crashes by Day of Week and Time of Day</u></a> .....	10
<a href="#"><u>Fatal Crashes by Day of Week and Time of Day</u></a> .....	11
<a href="#"><u>A-Injury Crashes by Day of Week and Time of Day</u></a> .....	12
<a href="#"><u>Crashes by Type of Road</u></a> .....	13
<a href="#"><u>Crashes by Type of Collision</u></a> .....	15
<a href="#"><u>Work Zone Crashes</u></a> .....	16
<a href="#"><u>Large Trucks Involved in Work Zone Crashes by Crash Severity</u></a> .....	17
<a href="#"><u>Fatal Work Zone Crashes by Time of Day and Day of Week</u></a> .....	17
<a href="#"><u>Deer Crashes</u></a> .....	18
<a href="#"><u>Pedestrian and Pedalcycle Crashes</u></a> .....	19
<a href="#"><u>Train Crashes</u></a> .....	20
<a href="#"><u>County Motor Vehicle Crash Statistics</u></a> .....	21
<a href="#"><u>Person Data Overview</u></a> .....	24
<a href="#"><u>Illinois Fatalities and Vehicle Miles Traveled 2003-2022</u></a> .....	25
<a href="#"><u>Drivers Involved in Crashes by Age and Crash Severity</u></a> .....	26
<a href="#"><u>Drivers Involved in Fatal Crashes by Age and Location</u></a> .....	27

## Table of Contents

<a href="#"><u>Injuries by Person Type, Age and Gender</u></a> .....	28
<a href="#"><u>A-Injuries by Person Type, Age and Gender</u></a> .....	29
<a href="#"><u>Fatalities by Person Type, Age and Gender</u></a> .....	30
<a href="#"><u>Teen (16-19 Years Old) Fatalities by Age and Person Type</u></a> .....	31
<a href="#"><u>Pedestrian</u></a> .....	32
<a href="#"><u>Pedalcyclist</u></a> .....	33
<a href="#"><u>Motorcyclist</u></a> .....	34
<a href="#"><u>Occupant Restraint Usage for People Killed and Injured</u></a> .....	35
<a href="#"><u>Alcohol-Related Fatal Crashes Data Overview</u></a> .....	37
<a href="#"><u>Drivers Killed by Age and BAC</u></a> .....	38
<a href="#"><u>Fatal Alcohol-Related Crashes by Time of Day and Day of Week</u></a> .....	38
<a href="#"><u>Fatal Crashes During the Holidays</u></a> .....	39
<a href="#"><u>Pedestrians and Pedalcyclists Killed by Age and BAC</u></a> .....	40
<a href="#"><u>Vehicle Data Overview</u></a> .....	42
<a href="#"><u>Registered Motor Vehicles by Type</u></a> .....	43
<a href="#"><u>Motor Vehicles Involved in Crashes</u></a> .....	44
<a href="#"><u>Tractor-Trailer Crashes</u></a> .....	44
<a href="#"><u>School Bus Crashes</u></a> .....	45
<a href="#"><u>Motorcycle Crashes</u></a> .....	46

# 2022 Illinois Crash Facts & Statistics

## Key Terms

### **BLOOD ALCOHOL CONCENTRATION (BAC)**

On July 2, 1997, a BAC of 0.08 or greater became the level at which a driver is considered legally intoxicated in Illinois. Prior to July 2, 1997, the level was 0.10.

### **CRASH**

An occurrence that takes place on public roadways, involves a moving motor vehicle and produces death, injury or damage in excess of \$1,500 to any one person's property when all drivers in the crash are insured. If any driver does not have insurance, the threshold is \$500. (The change in threshold took effect on Jan.1, 2009.)

### **DRIVER**

An occupant who is in actual physical control of a motor vehicle or, for an out-of-control vehicle, an occupant who was in control until control was lost. When the term driver is used, it includes drivers of all types of motor vehicles, including cars, vans, pickup trucks, motorcycles, tractor-trailers, emergency vehicles and buses.

### **FATALITY VS. FATAL CRASH**

A fatality is a death that results from a traffic crash. A fatal crash is a motor vehicle crash (single or multiple) that results in the death of one or more people.

### **INJURY CRASH**

Any motor vehicle crash that results in one or more non-fatal injuries.

### **A-INJURY (incapacitating injury)**

Any injury, other than a fatal injury, that prevents the injured person from walking, driving or normally continuing the activities he/she was capable of performing before the injury occurred. Includes severe lacerations, broken limbs, skull or chest injuries, and abdominal injuries.

### **B-INJURY (non-incapacitating injury)**

Any injury, other than a fatal or incapacitating injury, that is evident to observers at the scene of the crash. Includes a lump on the head, abrasions, bruises and minor lacerations.

### **C-INJURY (possible injury)**

Any injury reported or claimed that is not either an "A," "B" or fatal injury. Includes momentary unconsciousness, claims of injuries not evident, limping, complaints of pain, nausea and hysteria.

### **LOCATION (URBAN)**

Includes location in or adjacent to a municipality or other urban area with a population greater than 5,000.

### **LOCATION (RURAL)**

Includes all locations not classified as urban.

### **MILEAGE DEATH RATE**

Fatalities per 100 million vehicle miles of travel.

### **MOTORCYCLIST**

Any occupant, either operator (driver) or passenger, of a motorcycle.

### **PEDALCYCLIST**

Any occupant of a non-motorized vehicle that is propelled by pedaling. Includes bicycles, unicycles and tricycles.

### **PEDESTRIAN**

Any person who is not in or on a vehicle.

### **TRACTOR-TRAILER**

Alternative term for semi-truck.

### **TRAVEL**

Vehicle miles driven.

### **WORK ZONE CRASHES**

A motor vehicle traffic crash in which the first harmful event occurs within the boundaries of a work zone or an approach to or exit from a work zone, resulting from an activity, behavior or control related to the movement of the traffic units through the work zone. (For a full definition of a work zone, see page 17.)

# Crash Data

The motor vehicle crash data referenced in this section reflect crashes. The data do not reflect people involved in these crashes, unless otherwise specified.

# 2022 Illinois Crash Facts & Statistics

## Crash Data Overview

- ✦ In 2022, there were 298,347 crashes involving motor vehicles in Illinois. Injury crashes accounted for 20% of these crashes (59,795), while fatal crashes (1,147) accounted for less than 1.0% of these crashes.
- ✦ Crashes involving an A-injury accounted for 12.1% of injury crashes.
- ✦ Crashes involving pedestrians accounted for 1.4% of total crashes, 16.9% of fatal crashes and 6.2% of injury crashes.
- ✦ Crashes involving pedalcyclists accounted for less than 1.0% of total crashes, 3.1% of fatal crashes and 3.8% of injury crashes.
- ✦ Crashes involving speed accounted for 31.8% of total crashes, 43.8% of fatal crashes and 36.7% of injury crashes.
- ✦ Crashes involving motorcycles accounted for 1% of total crashes, 12.6% of fatal crashes and 3.7% of injury crashes.
- ✦ Crashes involving tractor-trailers accounted for 4% of total crashes, 12% of fatal crashes and 3.1% of injury crashes.
- ✦ Crashes occurring in work zones accounted for 2.3% of total crashes, 3% of fatal crashes and 1.9% of injury crashes.
- ✦ Crashes involving deer accounted for 4.9% of total crashes.
- ✦ There was an average of 1.1 deaths per fatal crash.
- ✦ 82.9% of fatal crashes occurred on dry roads.
- ✦ 46.6% of fatal crashes occurred during daylight hours.

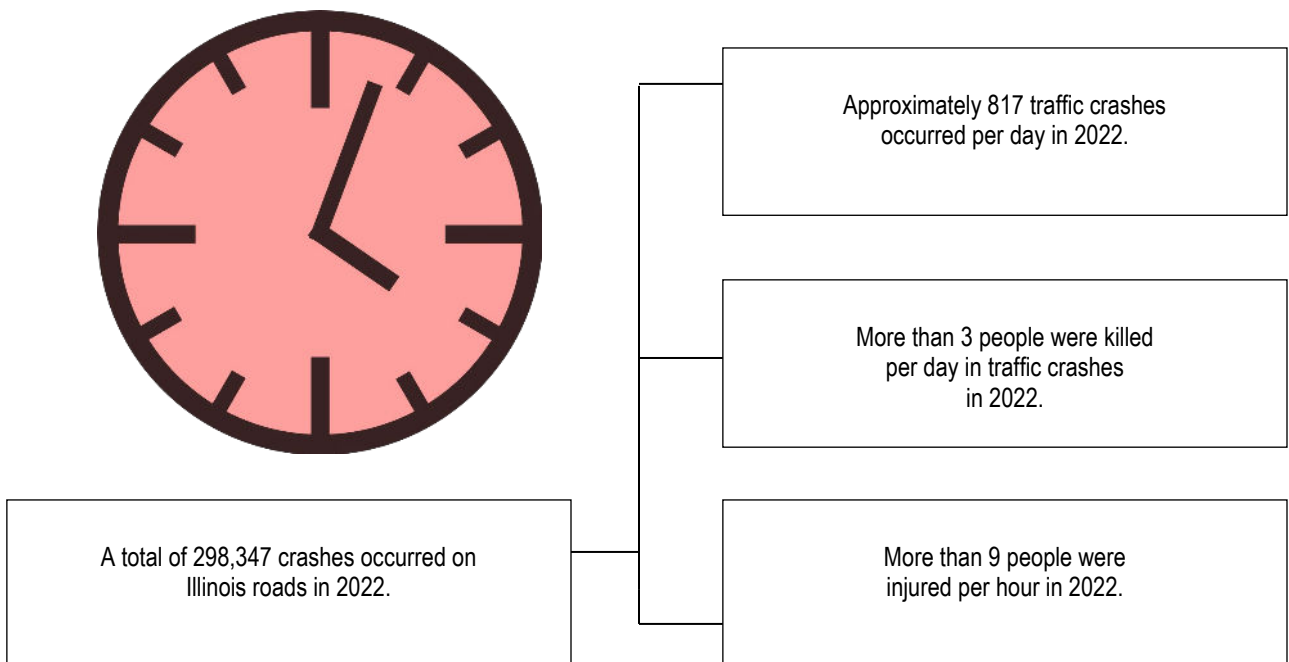


# 2022 Illinois Crash Facts & Statistics

<b>Registered Motor Vehicles*</b>	10,761,538
<b>Licensed Drivers*</b>	9,067,541
<b>Vehicle Miles Traveled (Billions)</b>	103.97
<b>Total Crashes</b>	298,347
<b>Total Injuries</b>	83,783
<b>A-Injuries</b>	8,921
<b>Total Deaths</b>	1,268
<b>Mileage Death Rate</b> (Per Hundred Million Vehicle Miles Traveled)	1.2

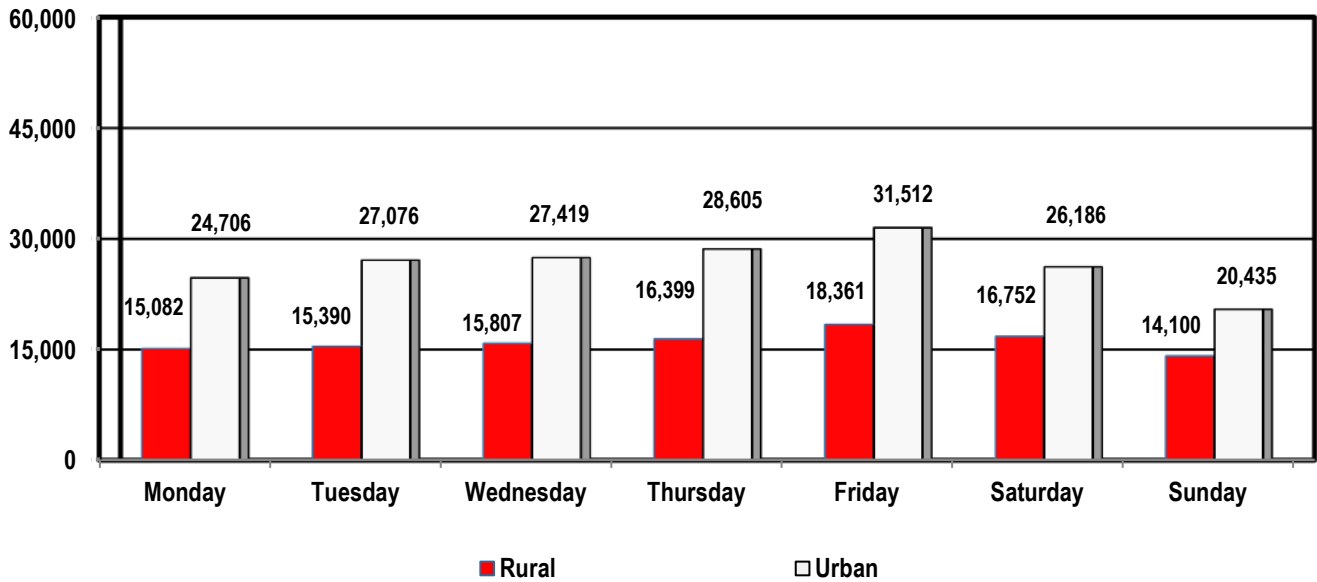
\*Source: Illinois Secretary of State's office.

## Illinois' Highway Safety Clock



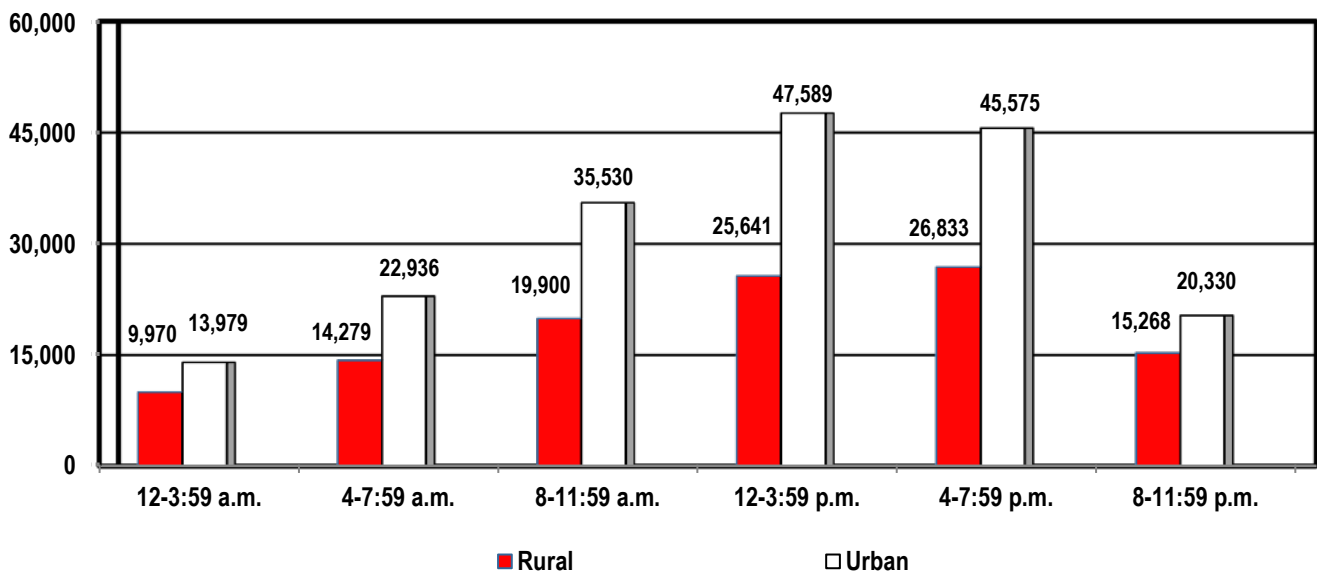
# 2022 Illinois Crash Facts & Statistics

## Crashes by Day of Week\*



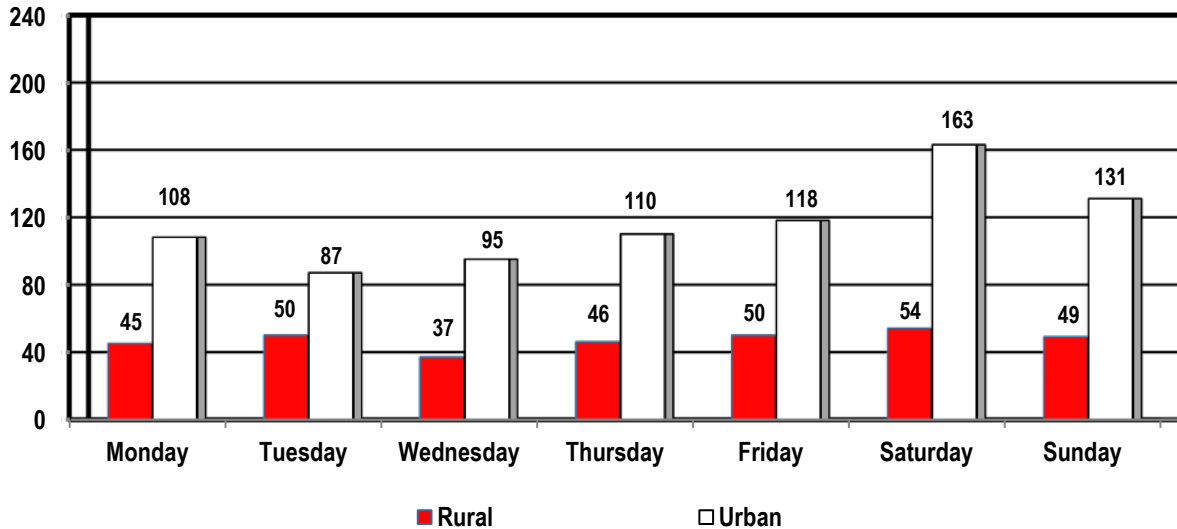
\*A total of 517 crashes occurred in an unknown location. The greatest number of crashes occurred on Fridays, with 31,512 crashes in urban locations and 18,361 crashes in rural locations.

## Crashes by Time of Day\*



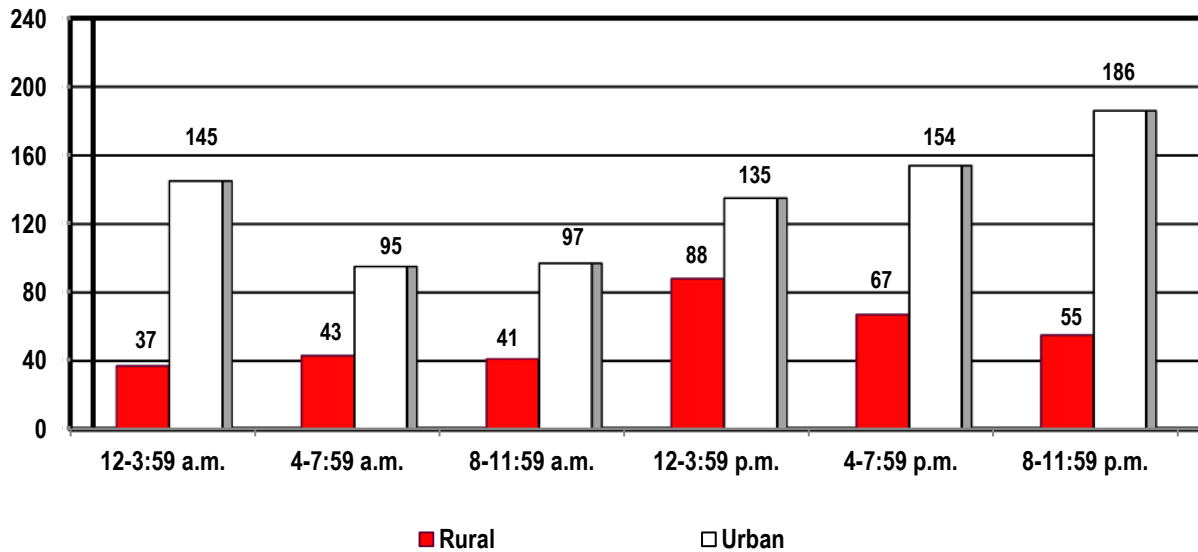
\*A total of 517 crashes occurred in an unknown location. More than 67.5% of all crashes occurred between 8 a.m. and 7:59 p.m. Of these crashes, 63.9% occurred on urban roads.

## Fatal Crashes by Day of Week\*



\*A total of 4 crashes occurred in an unknown location. The greatest number of fatal crashes occurred on Saturdays, with 163 crashes in urban locations and 54 crashes in rural locations.

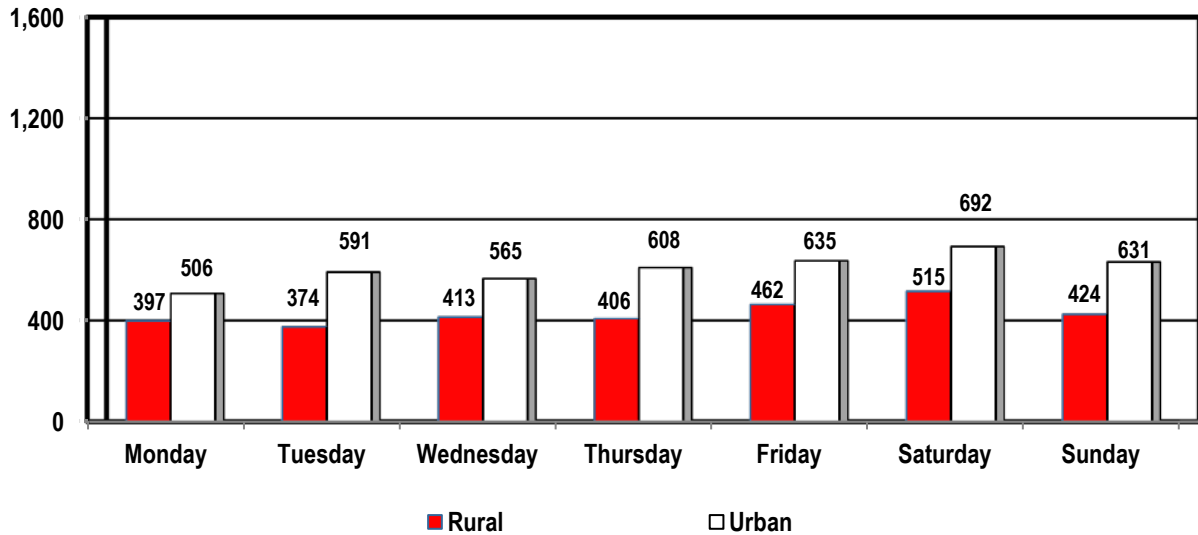
## Fatal Crashes by Time of Day\*



\*A total of 4 crashes occurred in an unknown location. In all, 56.3% of all fatal crashes occurred between 4 p.m. and 3:59 a.m. Of these crashes, 75.1% occurred on urban roads (485 crashes).

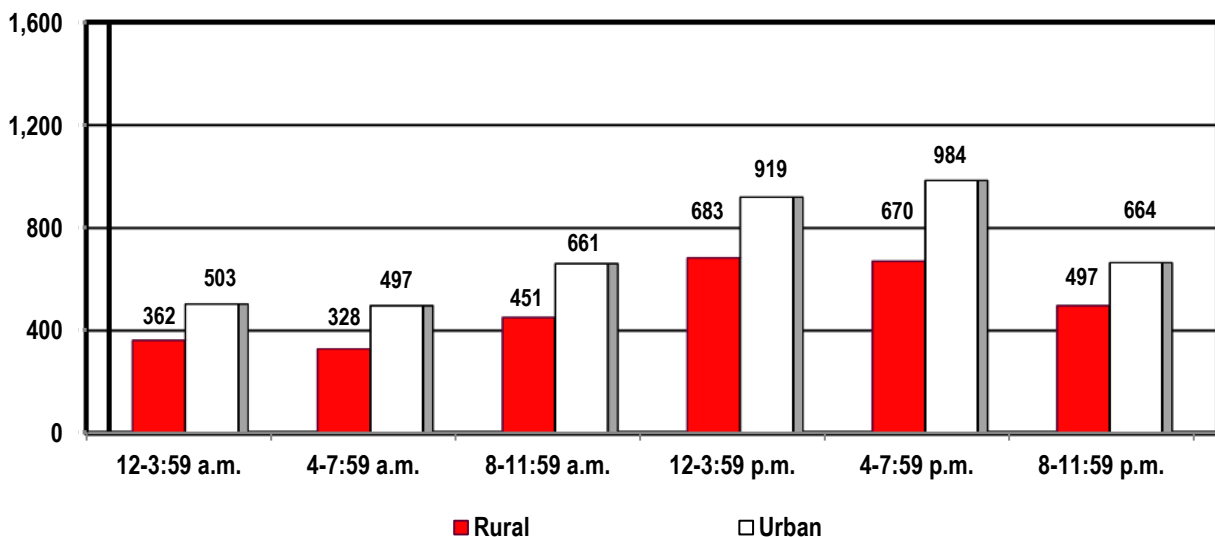
# 2022 Illinois Crash Facts & Statistics

## A-Injury Crashes by Day of Week\*



\*A total of 12 crashes occurred in an unknown location. The greatest number of A-injury crashes occurred on Saturdays. The second-largest number of A-injury crashes occurred on Fridays.

## A-Injury Crashes by Time of Day\*



\*A total of 12 crashes occurred in an unknown location. Approximately 61.2% of all A-injury crashes occurred between 12 p.m. and 11:59 p.m. Of these, 58% occurred on urban roads.

# 2022 Illinois Crash Facts & Statistics

## Crashes by Type of Road

In 2022, there were 298,347 total crashes. Of these crashes, 62.32% occurred on urban roads, while 66.09% of all injury crashes occurred on urban roads.

TYPE OF ROAD	CRASH SEVERITY			Total
	Fatal	Injury	A-Injury	
<b>URBAN</b>				
Freeway & Expressway/Toll	9	240	28	1,366
<i>Percent</i>	<i>0.78</i>	<i>0.40</i>	<i>0.39</i>	<i>0.46</i>
Interstate/Toll	134	4,575	424	32,788
<i>Percent</i>	<i>11.68</i>	<i>7.65</i>	<i>5.86</i>	<i>10.99</i>
Local Road or Street/Toll	70	6,715	781	34,872
<i>Percent</i>	<i>6.10</i>	<i>11.23</i>	<i>10.80</i>	<i>11.69</i>
Major Collector/Toll	103	5,320	570	22,731
<i>Percent</i>	<i>8.98</i>	<i>8.90</i>	<i>7.88</i>	<i>7.62</i>
Minor Arterial/Toll	226	10,040	1,087	40,837
<i>Percent</i>	<i>19.70</i>	<i>16.79</i>	<i>15.03</i>	<i>13.69</i>
Minor Collector/Toll	16	661	73	2,978
<i>Percent</i>	<i>1.39</i>	<i>1.11</i>	<i>1.01</i>	<i>1.00</i>
Other Principal Arterial/Toll	253	11,965	1,265	50,366
<i>Percent</i>	<i>22.06</i>	<i>20.01</i>	<i>17.49</i>	<i>16.88</i>
Unknown	1	0	0	1
<i>Percent</i>	<i>0.09</i>	<i>0.00</i>	<i>0.00</i>	<i>0.00</i>
<b>Urban Total</b>	<b>812</b>	<b>39,516</b>	<b>4,228</b>	<b>185,939</b>
<i>Percent</i>	<i>70.79</i>	<i>66.09</i>	<i>58.47</i>	<i>62.32</i>

# 2022 Illinois Crash Facts & Statistics

## Crashes by Type of Road

In 2022, there were 298,347 total crashes. Of these crashes, 37.5% occurred on rural roads, while 28.86% of all fatal crashes occurred on rural roads.

TYPE OF ROAD	CRASH SEVERITY			Total
	Fatal	Injury	A-Injury	
<b>Rural</b>				
Freeway & Expressway	2	12	3	83
<i>Percent</i>	0.17	0.02	0.04	0.03
Interstate/Toll	40	737	151	4,497
<i>Percent</i>	3.49	1.24	2.09	1.51
Local Road or Street	60	996	224	4,376
<i>Percent</i>	5.23	1.67	3.10	1.47
Major Collector	73	1,281	302	5,768
<i>Percent</i>	6.36	2.14	4.18	1.93
Minor Arterial	75	1,174	296	5,475
<i>Percent</i>	6.54	1.96	4.09	1.84
Minor Collector	9	202	45	875
<i>Percent</i>	0.78	0.34	0.62	0.29
Other Principal Arterial	71	833	181	4,119
<i>Percent</i>	6.19	1.39	2.50	1.38
Unknown	1	14,975	1,789	86,698
<i>Percent</i>	0.09	25.04	24.74	29.06
<b>Rural Total</b>	<b>331</b>	<b>20,210</b>	<b>2,991</b>	<b>111,891</b>
<i>Percent</i>	28.86	33.80	41.36	37.50
Overall Unknown	4	69	12	517
<i>Percent</i>	0.35	0.12	0.17	0.32
<b>Total</b>	<b>1,147</b>	<b>59,795</b>	<b>7,231</b>	<b>298,347</b>
<i>Percent</i>	100.00	100.00	100.00	100.00

# 2022 Illinois Crash Facts & Statistics

## Crashes by Type of Collision

At 25.98%, crashes involving fixed objects comprise the largest number of fatal crashes in 2022. Front-to-rear collisions comprise the highest number of injury crashes.

TYPE OF COLLISION	CRASH SEVERITY			Total
	Fatal	Injury	A-Injury	
Vehicle Overturned	55	1,531	378	2,906
Pedestrian	182	3,564	818	3,869
Train	8	24	9	89
Pedalcyclist	32	2,225	339	2,512
Animal	3	686	79	15,367
Fixed Object	298	7,230	1,290	30,558
Other Object	17	881	145	5,064
Other Non-Collision	14	582	132	2,440
Parked	16	2,103	263	35,775
Front to Rear	102	14,004	853	72,743
Front to Front	118	1,298	336	2,717
Sideswipe-Same Direction	32	2,890	230	35,415
Sideswipe-Opposite Direction	24	628	86	3,063
Angle	111	8,931	952	29,263
Turning	133	12,890	1,290	51,929
Rear to Side	1	126	13	1,635
Rear to Rear	0	11	2	413
Rear to Front	1	191	16	2,589
<b>TOTAL</b>	<b>1,147</b>	<b>59,795</b>	<b>7,231</b>	<b>298,347</b>

# 2022 Illinois Crash Facts & Statistics

## Work Zone Crashes

A work zone is an area of a trafficway (right-of-way line to right-of-way line) where construction, maintenance or utility work activities are identified by warning signs, signals or indicators, including those on transport devices that mark the beginning and end of a construction, maintenance or utility work activity. It extends from the first warning sign, signal or flashing lights to the "END ROAD WORK" sign or the last traffic control device pertinent to that work activity. In Illinois, the first warning sign denoting the beginning of a work zone consists of an orange diamond sign displaying the message "ROAD CONSTRUCTION AHEAD" or "ROAD WORK AHEAD." Work zones also include roadway sections where there is ongoing, moving work activity, such as lane line painting or roadside mowing, only if the beginning of the ongoing, moving work activity is designated by warning signs or signals.

A work zone crash is a motor vehicle traffic crash in which the first harmful event occurs within the boundaries of a work zone or the approach to or exit from a work zone, resulting in activity, behavior or control related to the movement of the traffic units through the work zone.

Workers do not have to be present at the time of the crash for it to be considered a work zone crash.

<b>Total Crashes</b>	6,775
<b>Fatal Crashes</b>	34
<b>Injury Crashes</b>	1,156
<b>A-Injury Crashes</b>	126
<b>People Killed</b>	37
<b>People Injured</b>	1,626

### CRASHES BY TYPE OF ROAD\*

<b>URBAN</b>	
Freeway & Expressway	35
Interstate/Toll	3,546
Local Road or Street	248
Major Collector	160
Minor Arterial/Toll	558
Minor Collector	15
Other Principal Arterial	872
Unknown	0
<b>Urban Total</b>	<b>5,434</b>
<b>RURAL</b>	
Freeway & Expressway	3
Interstate/Toll	358
Local Road or Street	25
Major Collector	30
Minor Arterial	50
Minor Collector	3
Other Principal Arterial	81
Unknown	789
<b>Rural Total</b>	<b>1,339</b>

\*Two crashes occurred at an unknown location.

### A-INJURIES AND FATALITIES BY PERSON TYPE

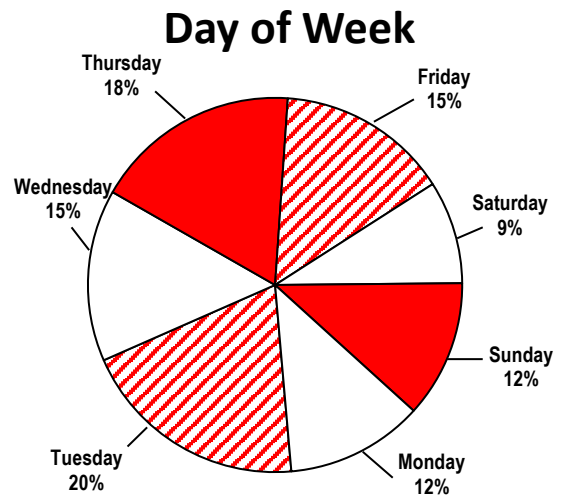
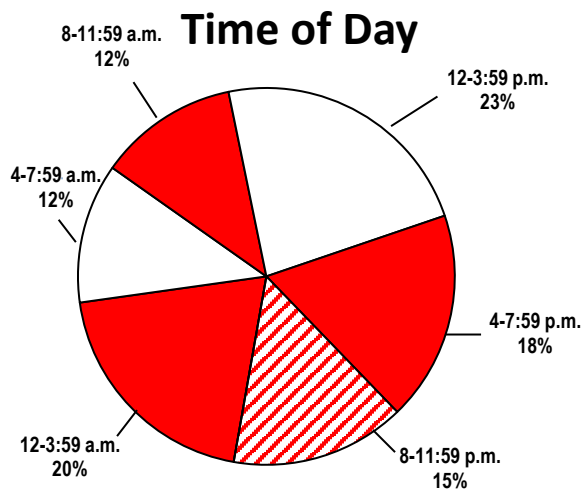
Person Type	A-Injuries	Fatalities
Drivers	108	24
Passengers	28	10
Workers	8	2
Pedestrians	1	1
Pedalcyclists	2	0



## Large Trucks Involved in Work Zone Crashes by Crash Severity

TRUCK TYPE	CRASH SEVERITY				Total
	Fatal	Injury	A-Injury	Property Damage	
Truck Single Unit	3	66	10	320	389
Tractor with Semi-Trailer	18	210	27	1,201	1,429
Tractor without Semi-Trailer	1	9	1	60	70
Single Unit Truck with Trailer	0	22	2	102	124
<b>TOTAL</b>	<b>22</b>	<b>307</b>	<b>40</b>	<b>1,683</b>	<b>2,012</b>

## Fatal Work Zone Crashes by Time of Day and Day of Week



# 2022 Illinois Crash Facts & Statistics

## Deer Crashes

In 2022, there were 14,516 crashes involving deer. Deer crashes account for about 4.9% of total crashes.

A total of 20.7% of deer crashes occurred during daylight hours; 62% occurred in darkness. Approximately 70.3% of deer crashes were on rural roads, with 23.4% of the crashes on rural major collectors.

<b>Total Crashes</b>	14,516
<b>Fatal Crashes</b>	3
<b>Injury Crashes</b>	628
<b>A-Injury Crashes</b>	68
<b>People Killed</b>	4
<b>People Injured</b>	723

### CRASHES BY LIGHT CONDITION

Daylight	3,000
Dawn	1,030
Dusk	579
Darkness	8,996
Darkness-Road Lighted	824
Unknown	87
<b>TOTAL</b>	<b>14,516</b>

### A-INJURY CRASHES AND FATAL CRASHES BY TYPE OF ROAD\*

Type of Road	A-Injury	Fatal
<b>URBAN</b>		
Freeway & Expressway/Toll	1	0
Interstate/Toll	2	0
Local Road or Street/Toll	2	0
Major Collector/Toll	3	0
Minor Arterial/Toll	3	0
Minor Collector	1	0
Other Principal Arterial/Toll	7	1
Unknown	0	0
<b>Urban Total</b>	<b>19</b>	<b>1</b>
<b>RURAL</b>		
Freeway & Expressway	0	0
Interstate/Toll	3	0
Local Street or Road	8	1
Major Collector	10	0
Minor Arterial	11	1
Minor Collector	2	0
Other Principal Arterial	7	0
Unknown	7	0
<b>Rural Total</b>	<b>48</b>	<b>2</b>

\*One A-injury crash occurred at an unknown location.

# 2022 Illinois Crash Facts & Statistics

## Pedestrian and Pedalcycle Crashes

	PEDESTRIAN			PEDALCYCLE		
<b>Total Crashes</b>	4,060			2,548		
<b>Fatal Crashes</b>	194			35		
<b>Injury Crashes</b>	3,725			2,251		
<b>A-Injury Crashes</b>	867			344		
<b>Property Damage Crashes</b>	141			262		
<b>Number of Crashes by Type of Road*</b>						
	<b>PEDESTRIAN Crash Severity</b>			<b>PEDALCYCLE Crash Severity</b>		
	<b>Fatal</b>	<b>Injury</b>	<b>A-Injury</b>	<b>Fatal</b>	<b>Injury</b>	<b>A-Injury</b>
<b>Urban</b>						
Freeway & Expressway/Toll	2	0	0	0	2	1
Interstate/Toll	14	28	9	0	6	2
Local Road or Street/Toll	18	651	143	3	423	72
Major Collector/Toll	15	413	89	9	270	35
Minor Arterial/Toll	52	568	138	7	372	68
Minor Collector	3	50	13	1	43	3
Other Principal Arterial/Toll	76	456	119	9	270	44
Unknown	1	0	0	0	0	0
<b>Urban Total</b>	<b>181</b>	<b>2,166</b>	<b>511</b>	<b>29</b>	<b>1,386</b>	<b>225</b>
<b>Rural</b>						
Freeway & Expressway	0	0	0	0	0	0
Interstate/Toll	0	4	2	0	0	0
Local Road or Street	2	17	7	2	8	1
Major Collector	2	9	4	3	6	1
Minor Arterial	3	12	4	0	6	1
Minor Collector	0	1	0	0	0	0
Other Principal Arterial	4	7	2	1	2	1
Unknown	0	1,502	336	0	840	114
<b>Rural Total</b>	<b>11</b>	<b>1,552</b>	<b>355</b>	<b>6</b>	<b>862</b>	<b>118</b>

\*In 2022, there were 2 fatal pedestrian crashes, 7 injury crashes and 1 A-injury crashes at unknown locations. There were 3 pedalcycle injury crashes and 1 A-injury crash at unknown locations.

# 2022 Illinois Crash Facts & Statistics

## Train Crashes

Train crashes are crashes in which motor vehicles are involved with trains. Pedestrians and pedalcyclists hit by trains are not included.

Fatal crashes and A-injury crashes involving trains account for less than 1% of all fatal and A-injury crashes combined in 2022.

### Fatalities and A-Injuries by Type of Road\*

<b>Total Crashes</b>	89
<b>Injury Crashes</b>	24
<b>A-Injury Crashes</b>	9
<b>Fatal Crashes</b>	8
<b>People Killed</b>	12
<b>People Injured</b>	52
<b>People with A-Injuries</b>	11

	Fatalities	A-Injuries
<b>Urban</b>		
Interstate	0	2
Local Street or Road	2	3
Major Collector	1	3
Minor Arterial	8	1
Other Principal Arterial	0	1
<b>Urban Total</b>	<b>11</b>	<b>10</b>
<b>Rural</b>		
Interstate	0	0
Local Street or Road	1	0
Major Collector	0	0
Minor Arterial	0	0
Other Principal Arterial	0	0
<b>Rural Total</b>	<b>1</b>	<b>0</b>

### Crashes by Type of Traffic Control

	Fatal	A-Injury
RR Gates	5	5
Other RR Crossing	1	1
Warning Sign	0	0
Stop Sign/Flasher	0	0
RR Crossing Sign	2	2
No Control	0	1
Traffic Signal	0	0
Yield	0	0
<b>TOTAL</b>	<b>8</b>	<b>9</b>

\*One additional A-injury occurred in an unknown location.

# 2022 Illinois Crash Facts & Statistics

## County Motor Vehicle Crash Statistics

COUNTY	CRASHES	FATAL CRASHES	INJURY CRASHES	A-INJURY CRASHES
Adams	1,217	12	223	30
Alexander	96	3	28	5
Bond	326	3	66	13
Boone	776	8	222	41
Brown	131	0	10	3
Bureau	716	5	102	20
Calhoun	93	1	16	6
Carroll	213	2	42	13
Cass	270	0	38	8
Champaign	3,169	19	776	110
Christian	452	3	124	27
Clark	369	6	50	15
Clay	301	2	51	13
Clinton	509	7	102	25
Coles	834	7	172	25
Cook	158,044	364	28,861	3,127
Crawford	415	2	66	16
Cumberland	274	2	49	11
DeKalb	1,555	14	369	64
DeWitt	334	1	55	6
Douglas	294	1	54	8
DuPage	16,466	37	3,620	271
Edgar	280	3	65	16
Edwards	58	1	10	1
Effingham	1,054	8	175	38
Fayette	405	2	70	19
Ford	251	1	52	12
Franklin	763	3	140	42
Fulton	711	3	111	32
Gallatin	74	2	17	6
Greene	100	2	22	2
Grundy	1,067	5	227	30
Hamilton	154	0	43	11
Hancock	320	0	45	6
Hardin	20	0	4	0
Henderson	207	2	29	11
Henry	799	6	148	25
Iroquois	563	8	133	23
Jackson	1,080	5	313	58
Jasper	196	4	41	11
Jefferson	917	5	198	37
Jersey	408	4	74	20
Jo Daviess	462	2	82	20
Johnson	232	1	44	13
Kane	9,947	38	2,329	238
Kankakee	2,330	13	404	48
Kendall	1,985	6	513	71
Knox	859	1	197	27
Lake	12,054	55	2,853	308
LaSalle	2,007	13	449	105
Lawrence	278	2	50	17

# 2022 Illinois Crash Facts & Statistics

## County Statistics (continued)

COUNTY	CRASHES	FATAL CRASHES	INJURY CRASHES	A-INJURY CRASHES
Lee	752	7	137	21
Livingston	538	5	129	20
Logan	559	4	117	22
McDonough	457	2	82	19
McHenry	4,471	18	1,072	125
McLean	3,128	20	664	61
Macon	2,185	9	509	62
Macoupin	762	6	111	26
Madison	5,223	33	1,141	173
Marion	822	11	137	23
Marshall	203	3	47	14
Mason	172	1	31	5
Massac	299	1	80	13
Menard	117	0	18	3
Mercer	215	1	35	10
Monroe	576	6	116	13
Montgomery	548	7	84	22
Morgan	586	5	138	25
Moultrie	221	1	42	8
Ogle	721	8	158	16
Peoria	3,975	20	1,068	133
Perry	369	0	89	30
Piatt	209	0	52	11
Pike	426	1	52	5
Pope	48	0	11	4
Pulaski	90	1	24	8
Putnam	151	0	21	3
Randolph	549	8	92	28
Richland	308	1	55	11
Rock Island	3,117	11	559	53
St. Clair	5,388	47	1,409	199
Saline	403	3	85	19
Sangamon	4,622	30	1,065	119
Schuyler	214	1	25	5
Scott	96	3	18	5
Shelby	333	3	69	21
Stark	43	1	10	3
Stephenson	826	4	146	29
Tazewell	2,262	14	504	68
Union	343	4	69	15
Vermilion	1,478	15	322	55
Wabash	125	0	27	11
Warren	372	4	75	10
Washington	322	9	79	24
Wayne	368	5	68	16
White	315	3	51	9
Whiteside	742	13	218	34
Will	14,042	59	3,021	280
Williamson	1,542	12	312	58
Winnebago	5,767	27	1,313	159
Woodford	512	6	104	21
<b>TOTAL</b>	<b>298,347</b>	<b>1,147</b>	<b>59,795</b>	<b>7,231</b>

# Person Data

The data reflected in this section include all people injured, uninjured and killed in motor vehicle crashes by person type.

# 2022 Illinois Crash Facts & Statistics

## Person Data Overview

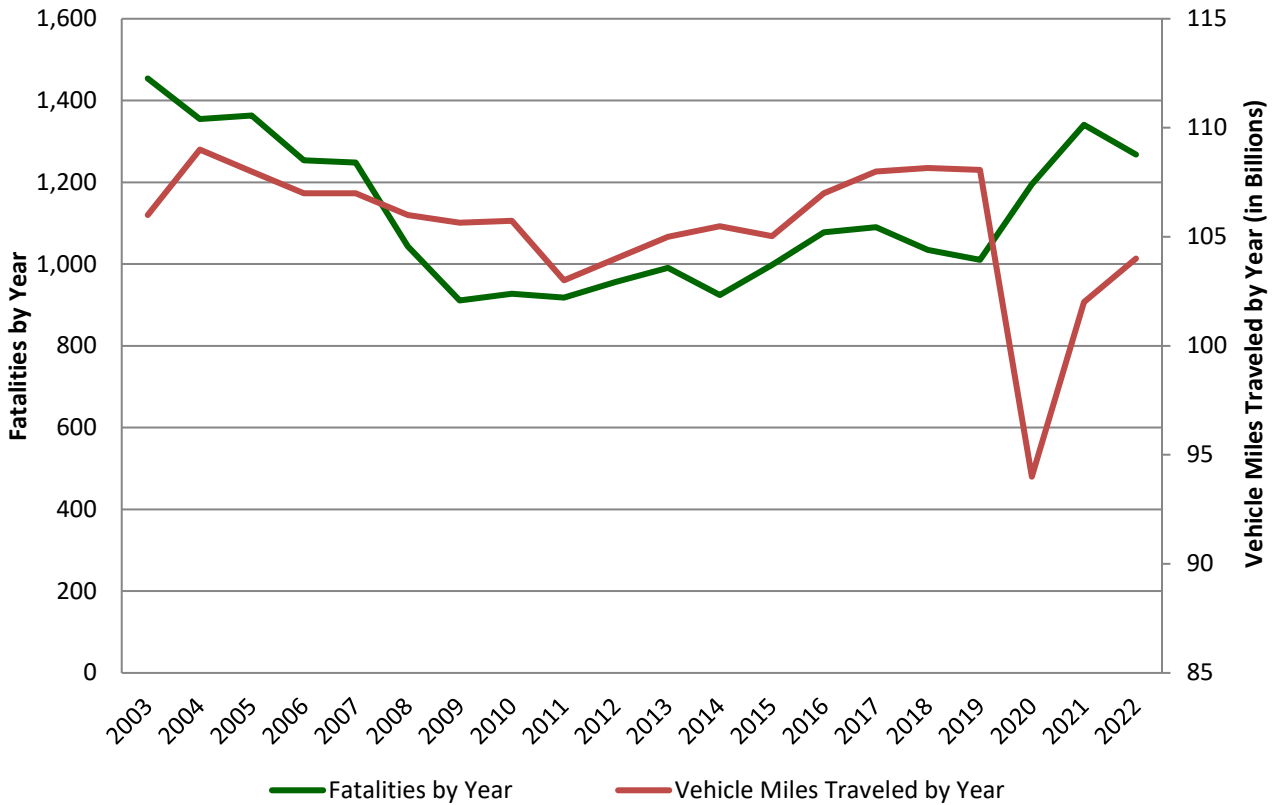
- ✚ 83,783 people were injured in motor vehicle crashes.
- ✚ 8,921 people had A-injuries occurring from these crashes. These A-injuries account for 10.6% of total injuries.
- ✚ 1,268 people were killed in motor vehicle crashes.
- ✚ 793 drivers were killed in motor vehicle crashes
- ✚ 244 passengers of a motor vehicle were killed in crashes.
- ✚ 196 pedestrians were killed in motor vehicle crashes.
- ✚ 35 pedalcyclists were killed in motor vehicle crashes.
- ✚ 145 motorcyclists were killed in motor vehicle crashes.
- ✚ Teenagers, age 16-19, account for 7.8% of the total A-injuries and 6.4% of the total fatalities.
- ✚ The total estimated cost of crashes in Illinois for 2022 was \$8 billion.
  - ✚ Each fatality was estimated to cost \$1,920,290\*.
  - ✚ An incapacitating injury (A-injury) was estimated to cost \$167,405\*.
  - ✚ A non-incapacitating evident injury (B-injury) was estimated to cost \$43,200\*.
  - ✚ A possible injury (C-injury) was estimated to cost \$25,920\*.
  - ✚ A property damage crash was estimated to cost \$6,160\*.

\*Based on estimates made by the National Safety Council for 2022. The estimated costs are a measure of the dollars spent and income not received because of crashes, injuries and fatalities. The 2022 estimated cost of crashes in Illinois was calculated by using injury severity and costs for those particular injuries.



# 2022 Illinois Crash Facts & Statistics

## Illinois Fatalities and Vehicle Miles Traveled\* 2003-2022



YEAR	FATALITIES	TRAVEL
2003	1,454	106.46
2004	1,355	108.91
2005	1,363	107.86
2006	1,254	106.81
2007	1,248	107.40
2008	1,043	105.64
2009	911	105.73
2010	927	105.74
2011	918	103.37
2012	956	104.46

YEAR	FATALITIES	TRAVEL
2013	991	105.48
2014	924	105.03
2015	998	105.37
2016	1,078	107.17
2017	1,090	108.16
2018	1,035	108.07
2019	1,010	107.61
2020	1,095	94.00
2021	1,341	102.22
2022	1,268	103.97

\*Travel is stated in billions of miles.

# 2022 Illinois Crash Facts & Statistics

## Drivers Involved in Crashes by Age and Crash Severity

AGE	CRASH SEVERITY						TOTAL		LICENSED DRIVERS
	Fatal Crashes	Rate	Injury Crashes	Rate	A-Injury Crashes	Rate	Total Crashes	Rate	
15 or Younger	10	0.15	152	2.31	25	0.38	532	8.08	65,871
16	19	0.16	1,443	12.48	153	1.32	6,559	56.73	115,617
17	25	0.20	1,963	15.47	208	1.64	8,646	68.12	126,922
18	31	0.24	2,385	18.20	234	1.79	10,604	80.91	131,060
19	42	0.31	2,529	18.59	276	2.03	10,588	77.83	136,045
20-24	209	0.29	12,666	17.78	1,315	1.85	55,075	77.29	712,549
25-29	191	0.25	12,377	16.25	1,337	1.76	54,138	71.10	761,462
30-34	212	0.27	11,277	14.34	1,304	1.66	49,451	62.90	786,164
35-39	138	0.18	9,498	12.19	1,024	1.31	42,788	54.92	779,054
40-44	127	0.17	8,786	11.42	964	1.25	39,282	51.06	769,289
45-49	118	0.17	7,355	10.40	766	1.08	33,850	47.86	707,291
50-54	130	0.18	7,235	9.98	808	1.11	32,389	44.68	724,925
55-59	116	0.16	6,596	9.16	719	1.00	29,539	41.02	720,117
60-64	117	0.16	5,765	7.85	626	0.85	25,697	34.99	734,357
65-69	99	0.15	4,142	6.39	505	0.78	18,279	28.18	648,707
70-74	78	0.15	2,945	5.73	311	0.61	12,529	24.38	513,963
75 or Older	110	0.17	3,875	6.11	437	0.69	15,468	24.39	634,148
Unknown	76	--	7,755	--	906	--	73,653	--	--
<b>TOTAL</b>	<b>1,848</b>	<b>0.20</b>	<b>108,744</b>	<b>11.99</b>	<b>11,918</b>	<b>1.31</b>	<b>519,067</b>	<b>57.24</b>	<b>9,067,541</b>

Rates are expressed as the number of drivers involved in a particular type of crash per 1,000 licensed drivers.

# 2022 Illinois Crash Facts & Statistics

## Drivers Involved in Fatal Crashes by Age and Location\*

AGE	RURAL ROADWAYS Drivers		URBAN ROADWAYS Drivers		TOTAL Drivers	
	Involved	Killed	Involved	Killed	Involved	Killed
15 or Younger	4	1	6	1	10	2
Percent	0.8	0.4	0.5	0.2	0.5	0.3
16	7	3	12	2	19	5
Percent	1.3	1.1	0.9	0.4	1.0	0.6
17	5	4	20	9	25	13
Percent	0.9	1.4	1.5	1.8	1.4	1.6
18	6	3	25	14	31	17
Percent	1.1	1.1	1.9	2.7	1.7	2.1
19	17	6	25	8	42	14
Percent	3.2	2.2	1.9	1.6	2.3	1.8
20-24	53	27	155	66	209	94
Percent	10.0	9.7	11.8	12.8	11.3	11.9
25-34	99	45	304	117	403	162
Percent	18.6	16.2	23.2	22.8	21.8	20.4
35-44	79	47	184	65	265	112
Percent	14.9	16.9	14.0	12.6	14.3	14.1
45-54	68	27	180	66	248	93
Percent	12.8	9.7	13.7	12.8	13.4	11.7
55-64	74	36	158	62	233	98
Percent	13.9	12.9	12.0	12.1	12.6	12.4
65-74	76	50	100	45	177	95
Percent	14.3	18.0	7.6	8.8	9.6	12.0
75 or Older	39	27	71	51	110	78
Percent	7.3	9.7	5.4	9.9	6.0	9.8
Unknown	4	2	72	8	76	10
Percent	0.8	0.7	5.5	1.6	4.1	1.3
<b>TOTAL</b>	<b>531</b>	<b>278</b>	<b>1,312</b>	<b>514</b>	<b>1,848</b>	<b>793</b>
Percent	100.0	100.0	100.0	100.0	100.0	100.0

\*In 2022, there were 5 drivers that were involved and one that was killed in crashes that occurred in unknown locations.

# 2022 Illinois Crash Facts & Statistics

## Injuries by Person Type, Age and Gender\*

Occupant: Any person who is part of a transport vehicle.

Non-Occupant: Any person who is part of a pedalcycle in transport (pedalcyclist) or any person who is not an occupant (pedestrian).

Drivers injured amount to 67.8% of all injuries for 2022.

Passengers represent 24.8% of the total number of injuries in 2022.

Pedestrians account for 4.6% of all injuries.

Pedalcyclists account for 2.7% of all injuries.

AGE	DRIVERS				PASSENGERS				TOTAL OCCUPANT INJURIES			
	Male	Female	Total	%	Male	Female	Total	%	Male	Female	Total	%
4 or Younger	0	1	1	0.0	594	638	1,232	6.0	594	639	1,233	1.6
5-9	0	0	0	0.0	672	843	1,515	7.3	672	843	1,515	2.0
10-14	1	0	1	0.0	711	892	1,603	7.8	712	892	1,604	2.1
15-19	2,317	2,118	4,435	7.8	1,179	1,661	2,840	13.8	3,496	3,779	7,275	9.4
20-24	3,461	3,520	6,981	12.3	928	1,422	2,350	11.4	4,389	4,942	9,331	12.1
25-34	6,859	6,430	13,289	23.5	1,353	1,835	3,188	15.5	8,212	8,265	16,477	21.4
35-44	5,105	4,773	9,878	17.5	761	1,186	1,947	9.4	5,866	5,959	11,825	15.3
45-54	4,117	3,878	7,995	14.1	528	1,129	1,657	8.0	4,645	5,007	9,652	12.5
55-64	3,645	3,227	6,872	12.2	456	1,021	1,477	7.2	4,101	4,248	8,349	10.8
65-74	2,171	1,831	4,002	7.1	231	701	932	4.5	2,402	2,532	4,934	6.4
75 or Older	1,184	1,115	2,299	4.1	164	438	602	2.9	1,348	1,553	2,901	3.8
Unknown	474	307	781	1.4	529	742	1,271	6.2	1,003	1,049	2,052	2.7
<b>TOTAL</b>	<b>29,334</b>	<b>27,200</b>	<b>56,534</b>	<b>100.0</b>	<b>8,106</b>	<b>12,508</b>	<b>20,614</b>	<b>100.0</b>	<b>37,440</b>	<b>39,708</b>	<b>77,148</b>	<b>100.0</b>

AGE	PEDESTRIANS				PEDALCYCLISTS				TOTAL NON-OCCUPANT INJURIES			
	Male	Female	Total	%	Male	Female	Total	%	Male	Female	Total	%
4 or Younger	33	36	69	1.8	5	1	6	0.3	38	37	75	1.2
5-9	75	42	117	3.0	39	6	45	2.0	114	48	162	2.7
10-14	138	99	237	6.2	225	52	277	12.3	363	151	514	8.4
15-19	186	160	346	9.0	260	68	328	14.6	446	228	674	11.0
20-24	162	182	344	8.9	161	65	226	10.0	323	247	570	9.3
25-34	339	326	665	17.3	304	104	408	18.1	643	430	1,073	17.6
35-44	300	225	525	13.6	217	56	273	12.1	517	281	798	13.1
45-54	251	182	433	11.2	184	39	223	9.9	435	221	656	10.8
55-64	291	190	481	12.5	203	33	236	10.5	494	223	717	11.8
65-74	184	145	329	8.5	87	15	102	4.5	271	160	431	7.1
75 or Older	73	69	142	3.7	37	8	45	2.0	110	77	187	3.1
Unknown	86	76	162	4.2	71	12	83	3.7	157	88	245	4.0
<b>TOTAL</b>	<b>2,118</b>	<b>1,732</b>	<b>3,850</b>	<b>100.0</b>	<b>1,793</b>	<b>459</b>	<b>2,252</b>	<b>100.0</b>	<b>3,911</b>	<b>2,191</b>	<b>6,102</b>	<b>100.0</b>

\*The totals above do not include 278 drivers, 150 passengers, 14 pedestrians and 4 pedalcyclists whose gender was unknown. An additional 87 occupants of non-motor vehicles were also injured.

# 2022 Illinois Crash Facts & Statistics

## A-Injuries by Person Type, Age and Gender\*

Occupant: Any person who is part of a transport vehicle.

Non-Occupant: Any person who is part of a pedalcycle in transport (pedalcyclist) or any person who is not an occupant (pedestrian).

Drivers injured amount to 64.9.6% of A-injuries for 2022.

Passengers represent 21.2% of the total number of A-injuries in 2022.

Pedestrians account for 9.9% of A-injuries.

Pedalcyclists account for 3.8% of A-injuries.

AGE	DRIVERS				PASSENGERS				TOTAL OCCUPANT A-INJURIES			
	Male	Female	Total	%	Male	Female	Total	%	Male	Female	Total	%
4 or Younger	0	0	0	0.0	32	37	69	3.7	32	37	69	0.9
5-9	0	0	0	0.0	31	30	61	3.3	31	30	61	0.8
10-14	0	0	0	0.0	62	53	115	6.1	62	53	115	1.5
15-19	279	151	430	7.5	140	136	276	14.7	419	287	706	9.2
20-24	410	252	662	11.5	115	158	273	14.6	525	410	935	12.2
25-34	911	485	1,396	24.2	137	184	321	17.1	1,048	669	1,717	22.5
35-44	642	356	998	17.3	70	137	207	11.1	712	493	1,205	15.8
45-54	504	310	814	14.1	52	115	167	8.9	556	425	981	12.8
55-64	451	261	712	12.4	45	77	122	6.5	496	338	834	10.9
65-74	256	153	409	7.1	27	61	88	4.7	283	214	497	6.5
75 or Older	134	106	240	4.2	18	49	67	3.6	152	155	307	4.0
Unknown	72	31	103	1.8	48	59	107	5.7	120	90	210	2.7
<b>TOTAL</b>	<b>3,659</b>	<b>2,105</b>	<b>5,764</b>	<b>100.0</b>	<b>777</b>	<b>1,096</b>	<b>1,873</b>	<b>100.0</b>	<b>4,436</b>	<b>3,201</b>	<b>7,637</b>	<b>100.0</b>

AGE	PEDESTRIANS				PEDALCYCLISTS				TOTAL NON-OCCUPANT A-INJURIES			
	Male	Female	Total	%	Male	Female	Total	%	Male	Female	Total	%
4 or Younger	8	5	13	1.5	0	0	0	0.0	8	5	13	1.1
5-9	16	9	25	2.8	2	1	3	0.9	18	10	28	2.3
10-14	32	8	40	4.5	21	3	24	7.0	53	11	64	5.2
15-19	31	22	53	6.0	20	8	28	8.2	51	30	81	6.6
20-24	43	36	79	9.0	29	5	34	10.0	72	41	113	9.2
25-34	81	69	150	17.0	49	14	63	18.5	130	83	213	17.4
35-44	77	40	117	13.3	37	11	48	14.1	114	51	165	13.5
45-54	71	35	106	12.0	41	10	51	15.0	112	45	157	12.8
55-64	75	53	128	14.5	38	10	48	14.1	113	63	176	14.4
65-74	57	35	92	10.4	16	3	19	5.6	73	38	111	9.1
75 or Older	24	24	48	5.4	9	2	11	3.2	33	26	59	4.8
Unknown	15	16	31	3.5	12	0	12	3.5	27	16	43	3.5
<b>TOTAL</b>	<b>530</b>	<b>352</b>	<b>882</b>	<b>100.0</b>	<b>274</b>	<b>67</b>	<b>341</b>	<b>100.0</b>	<b>804</b>	<b>419</b>	<b>1,223</b>	<b>100.0</b>

\*The totals below do not include 22 drivers, 20 passengers, and 4 pedestrians, whose gender was unknown. An additional 15 occupants of non-motor vehicles were also injured.

# 2022 Illinois Crash Facts & Statistics

## Fatalities by Person Type, Age and Gender\*

Occupant: Any person who is part of a transport vehicle.

Non-Occupant: Any person who is part of a pedalcycle in transport (pedalcyclist) or any person who is not an occupant (pedestrian).

Drivers killed amount to 62.5% of all fatalities.

Passengers represent 19.2% of the total number of fatalities, an increase of 3.4% from 2021 to 2022.

Pedestrians account for 15.5% of all fatalities, representing an 8.8% decrease from 2021 to 2022.

Pedalcyclists account for 2.8% of all fatalities.

AGE	DRIVERS				PASSENGERS				TOTAL OCCUPANT FATALITIES			
	Male	Female	Total	%	Male	Female	Total	%	Male	Female	Total	%
4 or Younger	0	0	0	0.0	5	4	9	3.7	5	4	9	0.9
5-9	0	0	0	0.0	4	5	9	3.7	4	5	9	0.9
10-14	0	0	0	0.0	3	5	8	3.3	3	5	8	0.8
15-19	39	12	51	6.5	19	14	33	13.7	58	26	84	8.1
20-24	71	23	94	11.9	20	13	33	13.7	91	36	127	12.3
25-34	128	34	162	20.5	18	19	37	15.4	146	53	199	19.3
35-44	85	27	112	14.2	17	12	29	12.0	102	39	141	13.7
45-54	70	23	93	11.8	6	11	17	7.1	76	34	110	10.7
55-64	79	19	98	12.4	12	10	22	9.1	91	29	120	11.6
65-74	74	21	95	12.0	2	9	11	4.6	76	30	106	10.3
75 or Older	60	18	78	9.9	5	25	30	12.4	65	43	108	10.5
Unknown	7	0	7	0.9	1	2	3	1.2	8	2	10	1.0
<b>TOTAL</b>	<b>613</b>	<b>177</b>	<b>790</b>	<b>100.0</b>	<b>112</b>	<b>129</b>	<b>241</b>	<b>100.0</b>	<b>725</b>	<b>306</b>	<b>1,031</b>	<b>100.0</b>

AGE	PEDESTRIANS				PEDALCYCLISTS				TOTAL NON-OCCUPANT FATALITIES			
	Male	Female	Total	%	Male	Female	Total	%	Male	Female	Total	%
4 or Younger	4	0	4	2.1	1	1	2	5.7	5	1	6	2.6
5-9	1	0	1	0.5	1	0	1	2.9	2	0	2	0.9
10-14	1	3	4	2.1	2	0	2	5.7	3	3	6	2.6
15-19	2	1	3	1.5	1	0	1	2.9	3	1	4	1.7
20-24	9	5	14	7.2	1	0	1	2.9	10	5	15	6.5
25-34	14	6	20	10.3	1	0	1	2.9	15	6	21	9.1
35-44	24	13	37	19.0	5	0	5	14.3	29	13	42	18.3
45-54	27	10	37	19.0	3	2	5	14.3	30	12	42	18.3
55-64	23	9	32	16.4	9	2	11	31.4	32	11	43	18.7
65-74	20	6	26	13.3	1	2	3	8.6	21	8	29	12.6
75 or Older	6	7	13	6.7	3	0	3	8.6	9	7	16	7.0
Unknown	3	1	4	2.1	0	0	0	0.0	3	1	4	1.7
<b>TOTAL</b>	<b>134</b>	<b>61</b>	<b>195</b>	<b>100.0</b>	<b>28</b>	<b>7</b>	<b>35</b>	<b>100.0</b>	<b>162</b>	<b>68</b>	<b>230</b>	<b>100.0</b>

\*The totals above do not include 3 drivers, 3 passengers, and 1 pedestrian whose gender was unknown.

# 2022 Illinois Crash Facts & Statistics

## Teen (16-19 Years Old) Fatalities by Age and Person Type

AGE	PERSON TYPE				OCCUPANT NON-MOTOR VEHICLE	TOTAL
	DRIVER	OCCUPANT	PEDESTRIAN	PEDALCYCLIST		
16	5	5	1	0	0	11
17	13	10	0	0	0	23
18	17	5	1	0	0	23
19	14	9	1	0	0	24
<b>TOTAL</b>	<b>49</b>	<b>29</b>	<b>3</b>	<b>0</b>	<b>0</b>	<b>81</b>

## Teen (16-19 Years Old) A-Injuries by Age and Person Type

AGE	PERSON TYPE				OCCUPANT NON-MOTOR VEHICLE	TOTAL
	DRIVER	OCCUPANT	PEDESTRIAN	PEDALCYCLIST		
16	75	53	10	7	0	145
17	90	54	9	3	1	157
18	99	71	13	4	0	187
19	148	48	7	3	0	206
<b>TOTAL</b>	<b>412</b>	<b>226</b>	<b>39</b>	<b>17</b>	<b>1</b>	<b>695</b>

# 2022 Illinois Crash Facts & Statistics

## Pedestrian

<b>Pedestrians Injured</b>			3,864
<b>Pedestrians with A-Injuries</b>			886
<b>Pedestrians Killed</b>			196
<b>PERSONS KILLED AND INJURED IN PEDESTRIAN CRASHES BY TYPE OF ROAD*</b>			
	<b>Killed</b>	<b>A-Injuries</b>	<b>Injuries</b>
<b>Urban</b>			
Freeway & Expressway	2	0	0
Interstate/Toll	15	11	44
Local Road or Street	19	149	703
Major Collector	15	96	451
Minor Arterial	54	152	646
Minor Collector	3	13	56
Other Principal Arterial	77	125	507
Unknown	1	0	0
<b>Urban Total</b>	<b>186</b>	<b>546</b>	<b>2,407</b>
<b>Rural</b>			
Freeway & Expressway	0	0	0
Interstate/Toll	0	2	4
Local Road or Street	2	7	21
Major Collector	2	4	9
Minor Arterial	3	5	17
Minor Collector	0	0	1
Other Principal Arterial	5	2	9
Unknown	0	356	1,622
<b>Rural Total</b>	<b>12</b>	<b>376</b>	<b>1,683</b>

\*There were 2 additional fatalities and 8 injuries, including 1 A-injury, that occurred at unknown locations.



## Pedalcyclist

<b>Pedalcyclists Injured</b>			2,256
<b>Pedalcyclists with A-Injuries</b>			341
<b>Pedalcyclists Killed</b>			35
<b>PERSONS KILLED AND INJURED IN PEDALCYCLE CRASHES BY TYPE OF ROAD*</b>			
	<b>Killed</b>	<b>A-Injuries</b>	<b>Injured</b>
<b>Urban</b>			
Freeway & Expressway	0	1	2
Interstate/Toll	0	2	6
Local Road or Street	3	73	436
Major Collector	9	35	275
Minor Arterial	7	68	378
Minor Collector	1	3	43
Other Principal Arterial	9	47	284
Unknown	0	0	0
<b>Urban Total</b>	<b>29</b>	<b>229</b>	<b>1,424</b>
<b>Rural</b>			
Freeway & Expressway	0	0	0
Interstate/Toll	0	0	0
Local Road or Street	2	1	8
Major Collector	3	1	6
Minor Arterial	0	1	6
Minor Collector	0	0	0
Other Principal Arterial	1	1	2
Unknown	0	114	854
<b>Rural Total</b>	<b>6</b>	<b>118</b>	<b>876</b>

\*There were an additional 3 injuries, including 1 A-injury, that occurred at unknown locations.

# 2022 Illinois Crash Facts & Statistics

## Motorcyclist

<b>Motorcyclists Injured</b>			2,395
<b>Motorcyclists with A-Injuries</b>			917
<b>Motorcyclists Killed</b>			145
<b>Non-Motorcyclists Killed</b>			4
<b>PEOPLE KILLED AND INJURED IN MOTORCYCLE CRASHES BY TYPE OF ROAD*</b>			
	<b>Killed</b>	<b>A-Injuries</b>	<b>Injuries</b>
<b>Urban</b>			
Freeway & Expressway/Toll	0	5	15
Interstate/Toll	20	52	160
Local Road or Street	11	102	301
Major Collector	14	65	188
Minor Arterial	34	138	421
Minor Collector	0	13	41
Other Principal Arterial/Toll	31	168	449
Unknown	0	0	0
<b>Urban Total</b>	<b>110</b>	<b>543</b>	<b>1,575</b>
<b>Rural</b>			
Freeway & Expressway	0	0	2
Interstate/Toll	1	10	34
Local Road or Street	4	32	81
Major Collector	10	55	115
Minor Arterial	15	45	81
Minor Collector	2	11	21
Other Principal Arterial	7	36	77
Unknown	0	202	577
<b>Rural Total</b>	<b>39</b>	<b>391</b>	<b>988</b>

\*There were an additional 4 injuries, including 2 A-injuries, that occurred at unknown locations.

# 2022 Illinois Crash Facts & Statistics

## Occupant Restraint Usage for People Killed and Injured\*

TYPE OF RESTRAINT	DRIVER			PASSENGER		
	Fatal	A-Injury	Injury	Fatal	A-Injury	Injury
None Used/Not Applicable	241	582	2,417	68	274	1,153
Shoulder and Lap Belt Used	255	3,099	41,020	99	922	13,162
Child Restraint Used Improperly	0	0	0	0	8	49
Child Restraint – Rear	0	0	0	3	7	231
Child Restraint – Forward	0	0	0	2	20	568
Child Restraint – Used	0	0	0	0	0	0
Child Restraint – Unknown	0	0	0	0	4	186
Child Restraint – Not Used	0	0	0	1	15	104
Booster Seat	0	0	0	0	5	177
Stretcher	0	1	3	0	0	0
Wheelchair	0	0	3	0	0	2
Unknown	138	1,126	10,182	53	489	4,262
<b>TOTAL</b>	<b>634</b>	<b>4,808</b>	<b>53,625</b>	<b>226</b>	<b>1,744</b>	<b>19,894</b>

## Occupant Restraint Usage for People with A-Injuries by Age\*

TYPE OF RESTRAINT	AGE GROUPS						Unknown
	0-3	4-5	6-9	10-14	15-20	21 or Older	
None Used/Not Applicable	1	1	3	24	141	669	17
Shoulder and Lap Belt Used	4	9	22	62	434	3,405	85
Child Restraint Used Improperly	8	0	0	0	0	0	0
Child Restraint – Rear	7	0	0	0	0	0	0
Child Restraint – Forward	11	6	2	0	0	0	1
Child Restraint – Unknown	4	0	0	0	0	0	0
Child Restraint – Not Used	4	9	2	0	0	0	0
Booster Seat	1	1	3	0	0	0	0
Stretcher	0	0	0	0	0	1	0
Unknown	7	8	17	23	208	1,247	105
<b>TOTAL</b>	<b>47</b>	<b>34</b>	<b>49</b>	<b>109</b>	<b>783</b>	<b>5,322</b>	<b>208</b>

\*Excludes buses, motorcycles and miscellaneous vehicles.

# Alcohol Data

The data referenced in this section are motor vehicle crashes occurring on Illinois public roadways in which at least one driver involved in the crash, either surviving or deceased, tested positive for alcohol.

## Alcohol-Related Fatal Crash Data Overview

- ✦ 1,147 fatal crashes occurred in 2022; 21% of these crashes involved alcohol.
- ✦ 1,268 people were killed in motor vehicle crashes.
- ✦ 793 drivers were killed in motor vehicle crashes. Of these drivers, 533 were tested for BAC and 37.9% tested positive with a BAC of 0.01 or greater.
- ✦ 196 pedestrians were killed in 2022. Of those, 89 were tested for BAC and 44.9% tested positive with a BAC of 0.01 or greater.
- ✦ 35 pedalcyclists were fatally injured in motor vehicle crashes. Of those, 13 were tested for BAC and 15.4% had a positive BAC of 0.01 or greater.
- ✦ Motorcycle operators accounted for 10.8% of the fatalities. Of those, 89 were tested for BAC and 47.2% tested positive with a BAC of 0.01 or greater.
- ✦ Teen drivers accounted for 3.9% of the overall fatalities. Of those, 34 were tested for BAC and 26.5% tested positive with a BAC of 0.01 or greater.

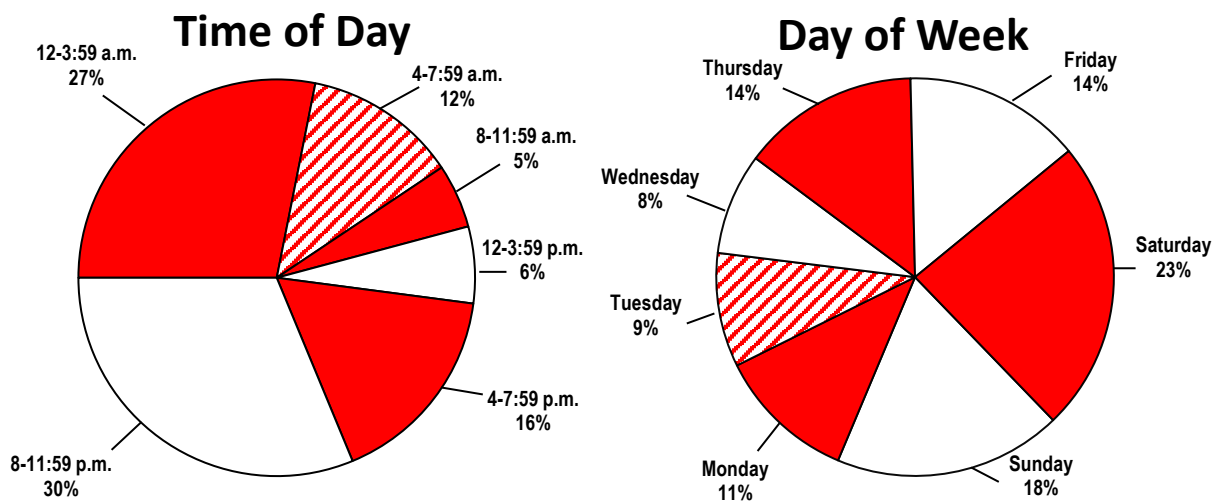
# 2022 Illinois Crash Facts & Statistics

## Drivers Killed by Age and BAC

AGE	BAC TEST RESULTS				TOTAL TESTED	NOT TESTED OR UNKNOWN IF TESTED	TOTAL KILLED
	0.00	0.01-0.07	0.08-0.20	Over 0.20			
15 or Younger	1	0	0	0	1	1	2
16-20	34	5	8	2	49	21	70
21-24	30	2	17	6	55	18	73
25-34	47	11	30	25	113	49	162
35-44	45	9	17	13	84	28	112
45-54	42	3	12	5	62	31	93
55-64	41	6	7	11	65	33	98
65-74	50	2	5	2	59	36	95
75 or Older	40	1	1	0	42	36	78
Unknown	1	0	1	1	3	7	10
<b>TOTAL</b>	<b>331</b>	<b>39</b>	<b>98</b>	<b>65</b>	<b>533</b>	<b>260</b>	<b>793</b>

## Fatal Alcohol-Related Crashes by Time of Day and Day of Week

Fatal alcohol-related crashes are fatal crashes in which at least one driver (surviving or deceased) had a Blood Alcohol Concentration of 0.01 or greater.



# 2022 Illinois Crash Facts & Statistics

## Fatal Crashes During the Holidays Total and Alcohol-Related\*

HOLIDAY PERIODS	NUMBER OF DAYS	FATAL CRASHES		FATALITIES	
		Alcohol-Related*	Total	Alcohol-Related*	Total
<b>Memorial Day</b>					
6 p.m. on 05/27/2022- 11:59 p.m. on 05/30/2022	3.25	7	of 14 50%	8	of 15 53.3%
<b>Fourth of July</b>					
6 p.m. on 07/01/2022- 11:59 p.m. on 07/04/2022	3.25	2	of 19 10.5%	2	of 20 10%
<b>Labor Day</b>					
6 p.m. on 09/02/2022- 11:59 p.m. on 09/05/2022	3.25	3	of 16 18.8%	4	of 17 23.5%
<b>Thanksgiving</b>					
6 p.m. on 11/23/2022- 11:59 p.m. on 11/27/2022	4.25	0	of 8 0%	0	of 9 0%
<b>Christmas</b>					
6 p.m. on 12/23/2022- 11:59 p.m. on 12/26/2022	3.25	1	of 11 9.1%	2	of 12 16.7%
<b>New Year's</b>					
6 p.m. on 12/30/2022- 11:59 p.m. on 01/02/2023	3.25	2	of 15 13.3%	2	of 16 12.5%

\*Fatal crashes or fatalities resulting from crashes in which at least one driver (surviving or deceased) had a Blood Alcohol Concentration of 0.01 or greater.

# 2022 Illinois Crash Facts & Statistics

## Pedestrians and Pedalcyclists Killed by Age and BAC

AGE	BAC TEST RESULTS				Not Tested Or Unknown If Tested	Total
	0.00	0.01-0.07	0.08-0.20	Over 0.20		
<b>Pedestrians</b>						
4 or Younger	2	0	0	0	2	4
5-9	0	0	0	0	1	1
10-15	1	0	0	0	3	4
16-20	4	0	2	0	2	8
21-24	6	0	0	0	3	9
25-34	4	1	3	3	9	20
35-44	5	4	5	6	17	37
45-54	11	2	2	5	17	37
55-64	6	2	0	2	23	33
65-74	7	1	1	1	16	26
75 or Older	3	0	0	0	10	13
Unknown	0	0	0	0	4	4
<b>TOTAL</b>	<b>49</b>	<b>10</b>	<b>13</b>	<b>17</b>	<b>107</b>	<b>196</b>
<b>Pedalcyclists</b>						
4 or Younger	1	0	0	0	1	2
5-9	1	0	0	0	0	1
10-15	0	0	0	0	3	3
16-20	0	0	0	0	0	0
21-24	0	0	0	0	1	1
25-34	1	0	0	0	0	1
35-44	1	0	0	0	4	5
45-54	1	0	0	0	4	5
55-64	4	1	1	0	5	11
65-74	1	0	0	0	2	3
75 or Older	1	0	0	0	2	3
<b>TOTAL</b>	<b>11</b>	<b>1</b>	<b>1</b>	<b>0</b>	<b>22</b>	<b>35</b>



# Vehicle Data

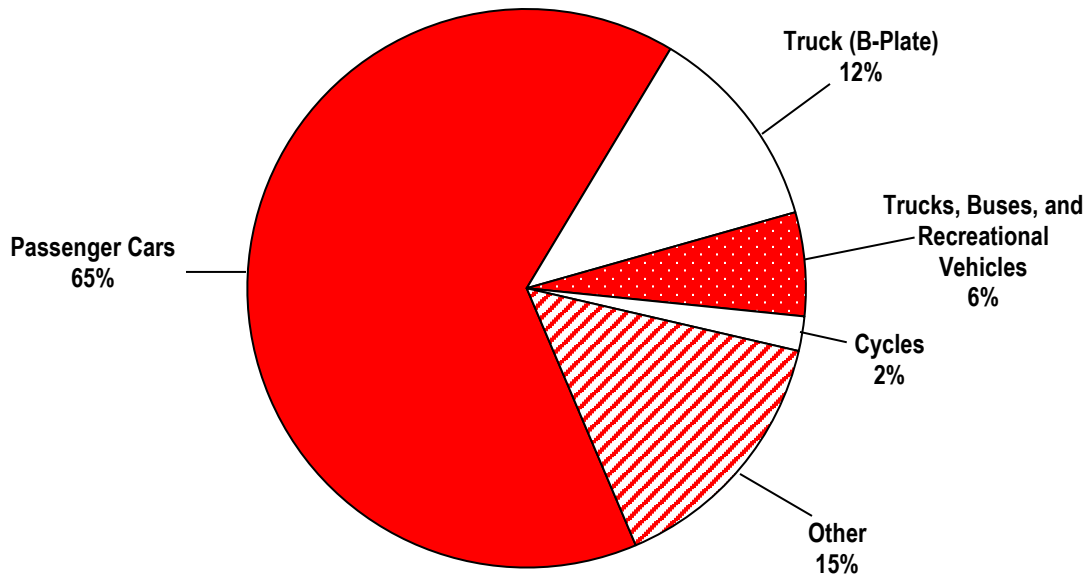
The data reflected in this section are crashes involving a specific vehicle type, including all vehicles involved in the crash as well as persons in those vehicles.

# 2022 Illinois Crash Facts & Statistics

## Vehicle Data Overview

- ✚ There were 3,081 motorcycle crashes in 2022.
- ✚ The number of motorcyclists killed decreased by 16.7% from 2021.
- ✚ Motorcyclists injured decreased by 5.9% from 2021.
- ✚ There were 11,922 crashes involving tractor-trailers in 2022.
- ✚ Fatalities resulting from tractor-trailer crashes increased by 31.4% from 2021.
- ✚ There were 903 crashes involving school buses in 2022.
- ✚ No school-age passengers on a school bus were killed in 2022, but 83 were injured.
- ✚ No school bus drivers were killed in 2022, but 28 were injured.

## Registered Motor Vehicles By Type



## Motor Vehicles Involved in Crashes

TYPE OF MOTOR VEHICLE	CRASH SEVERITY			VEHICLE OCCUPANTS	
	Fatal	Injury	Total	Killed	A-Injury
Passenger Car	862	67,383	325,227	537	4,273
Pickup Truck	226	8,263	42,298	101	648
SUV	317	21,779	104,399	155	1,193
Van	68	5,282	25,018	38	304
Other Single Unit Truck	46	1,499	9,365	13	47
Truck-Tractor with Semi-Trailer	155	2,022	13,009	16	76
Farm Tractor/Farm Equipment	7	69	262	4	7
School Bus	4	127	907	0	5
Other Bus	6	519	2,832	1	27
Motorcycle	152	2,271	3,158	145	917
Other or Unknown	74	3,757	37,701	27	182

# 2022 Illinois Crash Facts & Statistics

## Tractor-Trailer Crashes

There were 11,922 crashes involving tractor-trailers in Illinois in 2022. Tractor-trailer crashes account for 4% of total crashes.

Fatalities resulting from tractor-trailer crashes increased by 31.4% from 2021 to 2022. The number of fatal crashes also increased by 34%.

Injury crashes involving tractor-trailers account for 3.1% of all injury crashes. A-injuries account for 13.6% of all injuries in tractor-trailer crashes.

<b>Total Crashes</b>	11,922
<b>Fatal Crashes</b>	138
<b>Injury Crashes</b>	1,859
<b>A-Injury Crashes</b>	262
<b>Property Damage Crashes</b>	9,925
<b>Vehicle Miles Traveled (Millions)</b>	12,826

### PEOPLE KILLED AND INJURED BY PERSON TYPE

PERSON TYPE	Killed	A-Injury
Tractor-Trailer Occupants	16	76
Other Vehicle Occupants	127	256
Pedestrians	8	8
Pedalcyclists	4	3
Occupant of Non-Motor Vehicle	0	0
<b>TOTAL</b>	<b>155</b>	<b>343</b>

### CRASHES BY TYPE OF ROAD BY CRASH SEVERITY\*

TYPE OF ROAD	CRASH SEVERITY	
	Fatal	A-Injury
<b>URBAN</b>		
Freeway & Expressway/Toll	1	4
Interstate/Toll	34	67
Local Road or Street/Toll	4	4
Major Collector/Toll	1	6
Minor Arterial/Toll	12	16
Minor Collector	0	0
Other Principal Arterial/Toll	22	37
Unknown	1	0
<b>Urban Total</b>	<b>75</b>	<b>134</b>
<b>RURAL</b>		
Freeway & Expressway/Toll	1	1
Interstate/Toll	24	44
Local Road or Street	0	5
Major Collector	7	8
Minor Arterial	11	21
Minor Collector	0	0
Other Principal Arterial	20	10
Unknown	0	38
<b>Rural Total</b>	<b>63</b>	<b>127</b>

\*There was one additional A-injury crash that occurred in an unknown location.

## School Bus Crashes

In 2022, there were 903 school bus crashes. These crashes account for less than 1% of the total crashes for the year.

Injury crashes involving school buses increased by 27.3%, from 99 in 2021 to 126 in 2022. The number of injuries also increased by 33%. A-injuries account for 8% of these injuries.

<b>Total Crashes</b>	903
<b>Fatal Crashes</b>	4
<b>Injury Crashes</b>	126
<b>A-Injury Crashes</b>	17
<b>Property Damage Crashes</b>	773
<b>Urban Crashes</b>	557
<b>Rural Crashes</b>	345

One crash occurred in an unknown location.

### PEOPLE KILLED AND INJURED BY PERSON TYPE

PERSON TYPE	Killed	A-Injury
School Bus Drivers	0	3
School Bus Passengers (School-Age)*	0	1
Other School Bus Passengers	0	1
Other Vehicle Occupants	3	14
Pedestrians (School-Age)*	0	0
Other Pedestrians	1	1
Pedalcyclists	0	0
Occupants of Non-Motor Vehicles	0	0
<b>TOTAL</b>	<b>4</b>	<b>20</b>

\*School-Age = Children 5-19 years of age.

School Bus = Type 1 or Type 2.

### CRASHES BY TYPE OF ROAD BY CRASH SEVERITY

TYPE OF ROAD	CRASH SEVERITY	
	Fatal	A-Injury
<b>URBAN</b>		
Interstate /Toll	0	1
Local Road or Street	1	2
Major Collector	0	1
Minor Arterial	1	3
Minor Collector	0	1
Other Principal Arterial	1	2
Unknown	0	0
<b>Urban Total</b>	<b>3</b>	<b>10</b>
<b>RURAL</b>		
Interstate	0	0
Local Road or Street	0	0
Major Collector	0	2
Minor Arterial	0	1
Minor Collector	0	1
Other Principal Arterial	1	0
Unknown	0	3
<b>Rural Total</b>	<b>1</b>	<b>7</b>

# 2022 Illinois Crash Facts & Statistics

## Motorcycle

Motorcycle crashes accounted for 1% of all crashes in 2022. The number of motorcyclists killed decreased by 16.7%, from 174 in 2021 to 145 in 2022. These motorcycle fatalities accounted for 11.4% of all fatalities in 2022. The number of motorcyclists injured – 2,395 – decreased by 5.9% in 2022.

The figures below include motorcycles, motor scooters, motorbikes, mopeds and 3-wheeled motorcycles.

<b>Total Crashes</b>	3,081
<b>Fatal Crashes</b>	145
<b>Injury Crashes</b>	2,212
<b>A-Injury Crashes</b>	857
<b>Motorcyclists Killed</b>	145
<b>Motorcyclists Injured</b>	2,395
<b>Motorcyclists with A-Injuries</b>	917
<b>Non-Motorcyclists Killed</b>	4
<b>Non-Motorcyclists Injured</b>	172
<b>Non-Motorcyclists with A-Injuries</b>	19

### MOTORCYCLES INVOLVED IN CRASHES BY TYPE OF MANEUVER

Motorcycle Maneuver	Motorcycles Involved
Going Straight Ahead	1,860
Passing/Overtaking	122
Making Left Turn	146
Making Right Turn	123
Slow/Stopped in Traffic	143
Skidding/Control Loss	242
Changing Lanes	67
Other	273
Parked	102
Disabled	0
Unknown	80
<b>TOTAL</b>	<b>3,158</b>